

CENTENARY OF AMERICAN ARTIST JON SCHUELER (1916-1992) CELEBRATED THROUGHOUT 2016



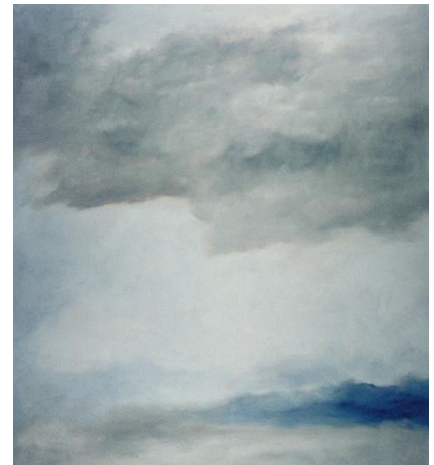
The Search: Red and Grey, II, 1981,
48 x 40" (o/c 1173).
University of Stirling Exhibition

Solo and group exhibitions, both in the US and in the UK, will mark the centennial of Jon Schueler's birth. A Jon Schueler **symposium**, *The Sound of Sleat: Echoes, Reflections, and Transfigurations*, moderated by Lindsay Blair, will take place at Sabhal Mòr Ostaig, the University of the Highlands and Islands, Isle of Skye, Scotland, May 27-29.

Two shows at the beginning of April set off events in Scotland: at the **University of Stirling** and at the **Heritage Centre in Mallaig**, where Schueler had a studio from 1970 to 1992. In May, we move north to Ullapool for openings at **An Talla Solais** and at **Rhue Art**. On the Isle of Skye, **Sabhal Mòr Ostaig** --along with hosting the 2-day Schueler symposium--will show a selection of the artist's oils and works on paper. The college, like the fishing village of Mallaig, witnesses the dramatic and mysterious weather patterns sweeping over the Sound of Sleat, the body of water that so often served as the source of Schueler's imagery and fantasies. For other exhibitions opening later in the year, see accompanying **list**.

The stunning Schueler exhibition, *Jon Schueler: Mapping Memory*, at the **Anderson Gallery**, State University of Bridgewater, MA marked the opening of the 2016 celebrations in the United States. The **Weisman Art Museum**, Minneapolis, MN is currently featuring its collection of Schueler's paintings "as center pieces surrounded by forerunners and successors" in its exhibition, *Clouds, Temporarily Seen*.

In August the **Arkansas Arts Center** in Little Rock will focus on the decisive summer of 1967 when, on the Isle of Skye, Schueler first immersed himself in the possibilities of watercolors. Various museums, such as the **Crocker Art Museum**, Sacramento, Ca, will be showing their Schuelers as part of group exhibitions during this year. For the finale we go to New York where the rarely seen "Woman in the Sky" paintings from the 60's will be featured at **Berry Campbell** (Nov.17 to Dec.23).






Sleat Remembered: Light, I, 1973, 76 x 69"
(o/c 393). Collection: Weisman Art Museum

For supplementary material and photographs contact:

Magda Salvesen, Curator, **Jon Schueler Estate**
40 West 22nd Street, 12th Floor, New York, NY 10010
Tel. 212-929-7614 E-mail: msalvesen@jonschueler.com

For the 2016 centenary Schueler **greeting cards and postcards**, and **ongoing updates** on the Jon Schueler 2016 centenary events in both the US and UK, please visit the

Jon Schueler website www.jonschueler.com and follow on:   

Jon Schueler, acclaimed member of the NY School, was born in Milwaukee, Wisconsin in 1916. After receiving a BA and MA from the University of Wisconsin at Madison, he joined the US Army Air Force in the fall of 1941, and, as a navigator of B-17s stationed in Britain, he flew missions over France and Germany. Following World War II he attended the California School of Fine Arts from 1948-51 where he was part of the vibrant group centered around Clyfford Still, Richard Diebenkorn, Hassel Smith and David Park. With the help and encouragement of Clyfford Still, Schueler moved to New York in 1951.

After solo exhibitions at the Stable Gallery (1954) and with Leo Castelli (1957), he spent six months in the North West of Scotland where his work, initially informed by Abstract Expressionism, became imbued with the force of the weather and the changing skies. New York became his base between 1959 and his death in 1992. These years, however, were punctuated by many visits to Mallaig, Scotland where he acquired a studio overlooking the Sound of Sleat in 1970. The weather and light of this area became a touchstone for his preoccupation with the power of nature—whether expressed tumultuously or in subtle and hidden forms. Numerous exhibitions in both the US and the UK took place during this period, including a solo show at the Whitney Museum of American Art, the group show *Landscapes, Interior and Exterior: Avery, Rothko and Schueler* at the Cleveland Museum of Art, and *Jon Schueler: The Search* at the University of Edinburgh's Talbot Rice Art Gallery in 1981.

Bibliography: *The Sound of Sleat: A Painter's Life* by Jon Schueler, Picador USA, 1999; *Jon Schueler: To the North*, with essays by Gerald Nordland and Richard Ingleby, Merrell, 2002

2016 Exhibitions in the US include:

- **Anderson Gallery, Bridgewater State University**, Bridgewater, MA. Jan 21 – March 24, *Mapping Memory: Jon Schueler Skyscapes*, curated and catalogue by Diana Ewer.
- **Frederick R. Weisman Art Museum**, Minneapolis, MN. Jan 30 -- May 22, *Clouds, Temporarily Visible*, themed show revolving around Schueler paintings.
- **Arkansas Arts Center**, Little Rock, AR. Aug 5-Oct 23, *Jon Schueler: Weathering Skies, Watercolors 1967-69*, then travels to the **University of Wyoming Art Gallery**, Laramie, WY, April 1-June 24, 2017.
- **Berry Campbell**, New York, NY . Nov 17 -Dec 23, *Jon Schueler: The Women Paintings of the 60s*.

2016 Exhibitions in Scotland (see map of venues on www.jonschueler.com) include:

- **Kelvingrove Art Gallery and Museum**, Glasgow. Jan--Dec 201, *Looking at Art*, featuring Jon Schueler's painting *The Search: Black Shadow Blues, IV* (o/c 1155).
- **Mallaig Heritage Centre, Mallaig**, Inverness-shire. April 4- October 2, *Jon Schueler: Sound of Sleat Reflections* commemorating Schueler's special association with Mallaig.
- **University of Stirling**, Pathfoot Building, Stirling. April 2– July 30, *Speaking of the Sky: Jon Schueler*.
- **Sabhal Mòr Ostaig**, Isle of Skye. May 27-July 9, *An Linne: Jon Schueler and the Sound*.
- **An Talla Solais**, Ullapool, Ross-shire. May 7-June 19, *Jon Schueler: Light Land and Sea*.
- **Rhue Art**, Ullapool, Ross-shire. May 7-June 19, *Jon Schueler: Distillation of Light*.
- **Inverness Museum and Art Gallery**, Inverness. June 25-July 31, *Skyscapes: A Centenary Celebration of Jon Schueler*; and travels to **The Thurso Gallery**, Thurso, Sutherland, Aug 6-Sep 17, and to **The Iona Gallery**, Kingussie, Oct.1-29.
- **Paisley Museum and Art Galleries**, Paisley. July 16-September 11, *Gesture-Expression in Modern Art*, group exhibition centered on five Schuelers.
- **Resipole Studios & Fine Art Gallery**, Argyll. August 5-Sept 18, *Schueler: Sea to Sky*, oils and works on paper.



Lost Man Blues, 1988, 18 x 16" (o/c 1549). An Talla Solais Exhibition

For supplementary material and photographs contact:

Magda Salvesen, Curator, **Jon Schueler Estate**
Tel. 212-929-7614 E-mail: msalvesen@jonschueler.com