



# NEWS Jon Schueler OCTOBER 2015

(1916-1992)

An excellent example of Schueler's late period, *Overnight Tears*, 1990, 16 x 20", o/c 1696 has been generously gifted by the art historian and former Milwaukee Art Museum director Gerald Nordland to the **University of Wyoming Art Museum, Laramie**.

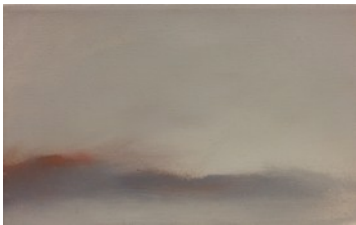
**Edinburgh University Art Collection, Scotland** has acquired two beautiful Schueler oils to hang side by side.

*Magda Series, 9:  
June Light,*  
1970, 28 x 36", o/c 117



*Light: Grey Sky and Sea,*  
1974, 28 x 24", o/c 524

The **Crocker Art Museum, Sacramento, CA** has selected its first Schueler, *Loch Scavaig*, 1957, 35 1/4 x 57 1/4", o/c 57-37, one of the important paintings from the 1957-58 period in Scotland.



**Inverness Museum and Art Gallery, Scotland** has added a third Schueler to its collection: *Changes: Sea and Skye*, 1980-81, 8 x 13", o/c 1037

Curated by Diana Ewer, "*Mapping Memory: Jon Schueler Skyscapes*" at the Wallace L. Anderson Gallery, **Bridgewater State University, MA** is the inaugural exhibition (January 21-March 24, 2016) marking the centenary of the birth of Jon Schueler. *Stream of Vapor*, 1982, 36 x 30", o/c 1261



The **Jon Schueler Symposium** on the Isle of Skye, Scotland, organized by **Sabhal Mòr Ostaig, University of the Highlands and Islands**, and Dr. Lindsay Blair, lecturer and researcher, takes place from May 27-29, 2016. An exhibition of Jon Schueler's paintings will also be on show.

See the web page: <http://www.smo.uhi.ac.uk/en/ealain-is-cultar/jon-schueler-centenary-symposium>

For further information on all the Schueler events in the UK and the US during 2016, please visit the web site: [www.jonschueler.com](http://www.jonschueler.com). A leaflet, designed and produced by the Resipole Studios, Scotland, showing all the venues in Scotland (plus a map) can also be downloaded.

 [Jon Schueler Facebook Page](#)

 [Jon Schueler Twitter Page](#)

THE JON SCHUELER ESTATE Magda Salvesen, Curator, 40 W 22nd ST, 12TH FL, NEW YORK, NY 10010  
phone: (212) 929-7614 email: [msalvesen@earthlink.net](mailto:msalvesen@earthlink.net) [WWW.JONSCHUELER.COM](http://WWW.JONSCHUELER.COM)