

# Jon Schueler *NEWS*

(1916-1992) *January 2019*



The Jon Schueler Estate thanks the [LewAllen Galleries](#), Santa Fe, NM for a beautiful exhibition (and catalogue), *Jon Schueler: Sky as Landscape*, in September 2018.

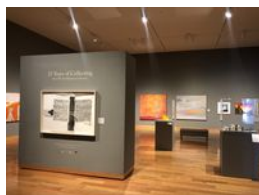
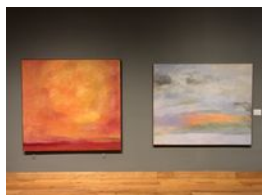
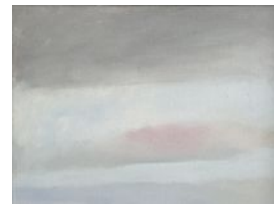
*Storm*, 1955, 46 x 48 inches (o/c 55-4)

was one of the paintings sold.

The late Linda Tarnay, dancer, choreographer and teacher at the [Tisch School of the Arts](#), generously bequeathed her Jon Schueler

*September Blues*, 1976, 18 x 24 inches (o/c 812)

to the [Grey Art Gallery](#), New York University, NY

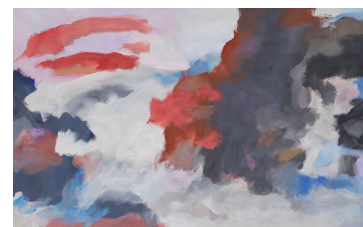


Two Schuelers, *The Sea is Red*, 1958 (o/c 58-44) and *North to Ornsay*, 1989 (o/c 824) are included in *25 Years of Collecting: [The UW Art Museum](#) Collection* in Laramie, WY (until January 26, 2019)

The exhibition *Lost Man Blues: Jon Schueler Art and War*, curated by Marisa Roth, tours through 2022. For bookings, please contact the Jon Schueler Estate. The brochure with an essay by Marissa Roth is available.

*Black, Red and Blues*,

1985, 50 x 79 inches (o/c 1470)



Schueler was brought up in Milwaukee, WI, receiving a BA and MA from the [University of Wisconsin at Madison](#). 3 paintings have been acquired by his home state through gallerist Dean Jensen who was retiring:

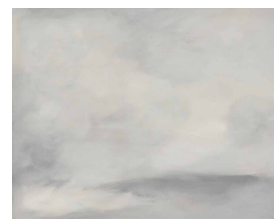


[Madison Museum of Contemporary Art](#), Madison, WI,  
*Counterpoint II*, c.1960, 22 x 30 inches (dr. 60-53)

[Chazen Museum of Art](#), Madison, WI,

*Shadow and Light Moving, III*,

Romasaig, Scotland, April 1972, 40 x 48 in (o/c 263)



[Racine Art Museum](#), Racine, WI  
*Night Sky, August, III*, Romasaig, Scotland,  
July-Aug 1971, 48 x 42 inches (o/c 147)

[The Eskenazi Museum of Art](#), Bloomington, IN acquired  
*To What End Does This Achieve?*, 1987, 44 x 66 inches (o/c1510)



Upcoming group exhibition:

*Lens and Canvas: Catharsis from World War II*, curated, and book (published by [Norfolk Press](#), CA) by Laura Whitcomb, at the [Foster Gwin Gallery](#), San Francisco, CA April-May 2019. One of the works from Schueler's time at the California School of Fine Art is:

*Abstract, III*, 1949, 18.75 x 23.75 inches (o/p 49-3)