

Photo by Archie Iain McLellan, 1981

NEWS Jon Schueler

APRIL 2013

(1916-1992)

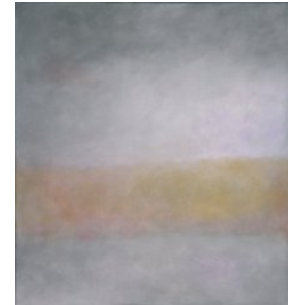
**AB-EX/ RE-CON:
Abstract Expressionism Reconsidered**
is at the Nassau County Museum of Art,
Museum Drive, Roslyn Harbor, NY,
March 9-June 16. This fascinating exhibition
includes Jon Schueler's early oil,
Small Painting, III, 1950, 20" x 24" (o/c 50-2)
from the collection of Bruce M. Clark.



The Jon Schueler oil, **Ballachulish Mist**, 1956, 51" x 45" (o/c 57-8)
is part of the group exhibition **About Abstraction** at the David Findlay Jr Gallery,
724 Fifth Ave, New York, NY, April 6-27. Reception April 6, 3.00-5.00pm.

In Schueler's hometown, Milwaukee, WI, the Dean Jensen Gallery, 759 N. Water Street, holds a
one-person exhibition **Jon Schueler: Second Coming** from April 19-June 4.

A catalogue, with an essay by Katherine Murrell,
University of Wisconsin—Milwaukee will be available.
Sun and Grey Sea, II, 1973, 40" x 36" (o/c 331)



China Blues, 1983, 32" x 48" (o/c 1331) is included in **Personal Perspectives**-- favorite paintings from
the museum's collection-- chosen by the curators of the Springfield Art Museum, Springfield, MO and
city leaders. It continues until June 2nd.

Sabhal Mor Ostaig, the Gaelic university on the Isle of Skye, Scotland,
has announced that the panel of Arthur Watson, President of the Royal Scottish Academy, Sheila
Hayman, Independent Curator and Kath McLeod, Arts Development Officer for Sabhal Mor Ostaig,
have selected the Japanese photographer, Takeshi Shikama to be the first recipient of the Jon
Schueler Residency. See the website: www.shikamaphoto.com



To hear Jon Schueler on the double bass in 1951, with friends from the California School of Fine Arts
and others in the Studio 13 Jass Band, go to the San Francisco Museum of Modern Art's web site:
<http://www.sfmoma.org/explore/multimedia/audio/154>. Great Dixie plus!
Roland Howser, banjo; Jon Schueler, double bass; Jack Lowe, drums; Elmer Bischoff, trumpet; David
Park, piano; & Charles Clark, clarinet